

Impact in Motion

FIVE YEARS OF TALENT, INNOVATION, AND TRANSFORMATION IN TORONTO



Looking back, moving forward

When it was established in 2018, Toronto became Northeastern University's first international campus, marking a bold step in its development as a global institution. Since then, the campus has evolved into a vibrant hub of experiential learning, industry and community engagement, and societal impact.

This report reflects on the past five years—a pivotal chapter in our journey. It highlights a period of significant progress, shaped by meaningful partnerships, teamwork across the global university, and a shared commitment to preparing learners for the future of work. Here in Toronto, that means fuelling the region's rapidly expanding technology economy, which added nearly 96,000 jobs between 2018 and 2023. Today, the city ranks among the top tech markets in North America.

At our campus, these efforts are realized through co-ops and experiential learning that launch careers, research that solves real problems, and collaborations that foster community and industry transformation.

We've enabled learners to pivot into high-demand fields. We've worked alongside leading employers to respond to emerging workforce needs. And we've reinforced Northeastern's global learning model, grounded in experience, agility, and connectivity.

The past five years represent more than momentum. They underscore a campus coming into its own—deepening its purpose, expanding its reach, and building the foundation for what's ahead. As we celebrate stories of achievement, we also look forward to new challenges, emerging opportunities, and a future shaped by lifelong learning.

Local Roots, Global Reach

Founded in 1898, Northeastern University is a global research university that centres education and research on understanding and solving widespread, global problems. As the leader in experiential learning, our education and research programs drive real-world impact and erase the boundaries separating higher education from the rest of the world.

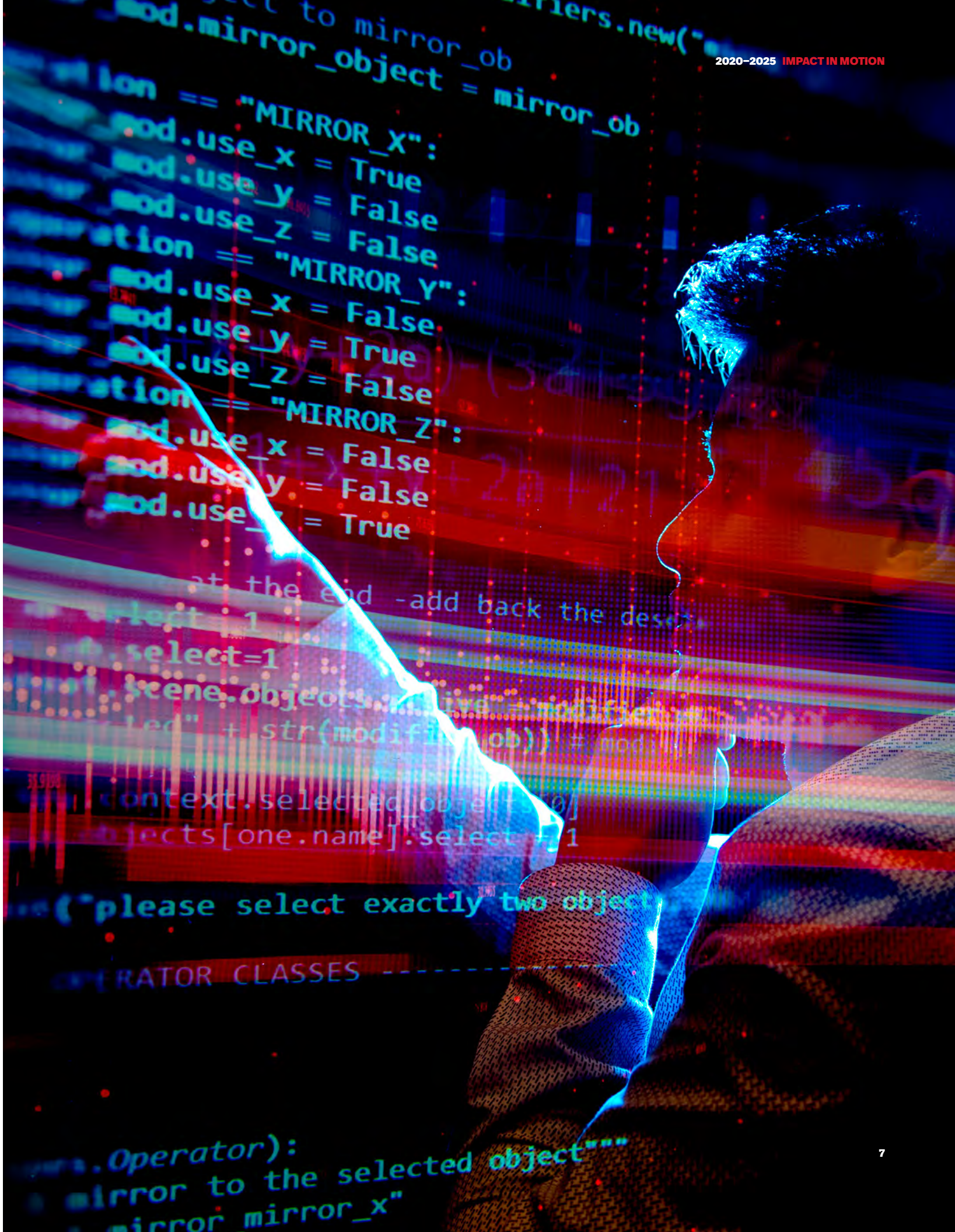
With 13 campuses across North America and the United Kingdom, Northeastern’s global university is anchored by shared research, employer partnerships, and nearly 320,000+ alumni. This network unites learners and organizations worldwide, multiplying the value of a Northeastern degree.

Northeastern’s outcome-oriented academic framework powers our international reach by combining academics with experience through one of the world’s first co-op education programs, introduced in 1909. For more than 115 years, this model has blended study, work, research, and service to prepare learners to succeed in a changing world.

Toronto’s campus exemplifies this mission through a distinctly local lens. Established as Northeastern’s first international site, the city was selected for its innovative spirit, vibrant labour market, and potential to fill a regional gap in education.

That vision is a reality. Graduate programs in biotechnology, analytics, project management, and regulatory affairs are directly aligned with Ontario’s talent needs, while linking students to opportunities across the city and our global university. Toronto now ranks among the leading tech talent markets in North America—evidence of both the city’s momentum and Northeastern’s role in equipping talent to match it.

With over 1,000 learners and nearly 200 faculty and staff, Northeastern University’s Toronto location is redefining what graduate education can be: attuned to workforce needs, globally integrated, and deeply rooted in the city it serves.



Our Campus by the Numbers

Our Toronto location has grown into a dynamic environment of learners, educators, industry and community partners. Serving thousands of students and producing graduates who excel in high-impact careers, the campus sparks innovation, inspires collaboration, and continues to expand programs to meet the moment.

3,860+

STUDENTS SERVED

11

GRADUATE PROGRAMS

2,500+

GRADUATES

1,000+

EMPLOYER AND COMMUNITY
PARTNERS

50+

FULL-TIME STAFF

93%

EMPLOYMENT RATE WITHIN NINE
MONTHS OF GRADUATION

130+

FACULTY MEMBERS

**All figures as of October 2025.*

Northeastern University

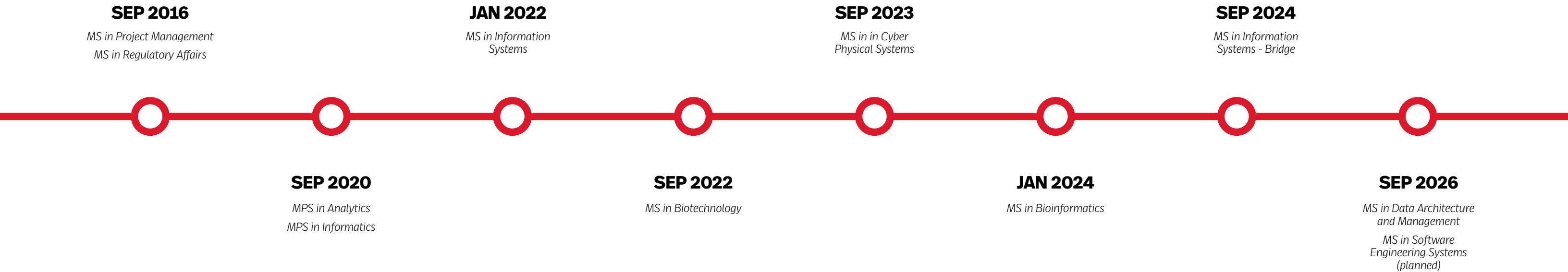
2025 STUDENT ACHIEVEMENTS IN PROFILE

*Our largest graduating class ever: **900***

*Top honours earned: **11 Laurel and Scroll Awards**, recognizing exceptional graduate and professional students across Northeastern's global university*



Arina Garousi
MS in Project Management '25



Our Momentum: Powered by Industry Insights

Guided by academic expertise, Northeastern’s Toronto campus graduate programs are strengthened through active engagement with the industries they serve. Central to this approach are our Program Advisory Committees (PACs): cross-sector groups of industry leaders, innovators, and employers who help us to ensure that our offerings are relevant, adaptable, and rigorous.

Our 75+ active PAC members represent a wide range of disciplines that drive Ontario’s economy, including biotechnology, healthcare, financial services, technology, government, and non-profit leadership. They provide in-depth insights into labour market trends, emerging technologies, and evolving skills, informing curriculum design and enhancing educational outcomes.

More than just consultative, these advisory relationships are collaborative. PAC members participate in classroom activities, facilitate co-op and experiential learning opportunities, and mentor students through events and panels. Through their advice, students gain actionable insights and immersive learning opportunities that prepare them for the workforce.

As our academic areas continue to grow, this industry-academic partnership model remains key, helping our programs adapt alongside shifting economic and industry priorities.



Driving Innovation at Scale in the Classroom and Beyond

Northeastern Toronto faculty members are more than educators. They are researchers, creators, and global collaborators, shaping the future of their fields and creating meaningful impact at scale outside the classroom.



Dr. Carol Hannam

*Associate Teaching Professor,
College of Science*

For Professor Carol Hannam, student opportunity comes first. With more than 15 years of experience across academia and the biotechnology industry, she champions professional development in all its forms. Working closely with the Toronto Partnerships team, Prof. Hannam brings experts into Biotechnology classrooms, creates co-op pathways, and develops applied projects. She also organizes student treks and conference participation, opening doors to Canada’s vibrant life sciences ecosystem and future career paths.



Dr. Zheng Zheng

*Assistant Teaching Professor,
College of Engineering*

What if artificial intelligence could restore centuries-old murals? Professor Zheng Zheng is making this a reality by engineering a tool that uses deep learning and computer vision to reconstruct damaged artwork digitally. His model is trained on images as well as historical and textual context to ensure authenticity. Students participate directly in early-stage research, becoming familiar with a complex AI application. Prof. Zheng’s work illustrates how technology, the humanities, and applied learning intersect to solve real problems—one mural at a time.



Dr. Adel Zadeh

*Teaching Professor and Campus Director,
College of Professional Studies (CPS)*

A project management expert, Professor Adel Zadeh is advancing worldwide sustainability research and cross-campus efforts across Northeastern. His research has led to partnerships with faculty at our Boston, Arlington, Miami, and London locations, as well as with organizations such as the UN Environment Programme. In 2024, Prof. Zadeh’s team contributed to Geneva discussions on the global sand crisis and is now supporting a UN report on the topic. That year, his team also secured funding from the British Academy of Medical Sciences to host international symposia and roundtables in the U.S. and U.K. As Toronto’s CPS Campus Director, Prof. Zadeh bridges campuses and industries through site visits and partnership development, advancing a scalable model for interdisciplinary projects, experiential learning, and knowledge exchange.

Experiential Learning that Connects

At Northeastern, students don’t just study problems in theory—they actively solve them. Students apply their skills in real-world settings while building networks in high-demand industries through:



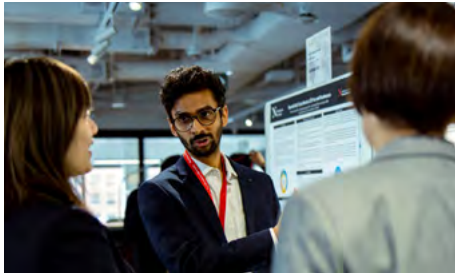
Cooperative Education (Co-op)

Full-time, paid work experiences where students alternate between classroom learning and professional employment.



Course-Embedded Experiential Projects

Virtual and in-person engagements undertaken within specific courses that match students with practical challenges posed by industry.



Experiential Capstones

Culminating academic experiences where students tackle substantial, real-world problems, often working with industry partners.



Hackathons and Treks

Intensive, time-bound events where students co-create original solutions to specific challenges.



Co-Curricular Experiential Program (CEP):

Flexible, short-term projects that enable students to support community initiatives while earning digital badges.



Professional Mentorship

Students connect directly with industry professionals to provide personalized guidance and real-world insights that transform theoretical knowledge into practical skills through meaningful professional relationships.



Rujavi Ghelani
MS in Biotechnology '25

In Toronto, Northeastern’s global experiential model comes alive in a uniquely Canadian context. Whether onsite or online, our students interact with organizations in the region’s leading sectors, including tech, healthcare, sustainability, and non-profit. These experiences strengthen the agility, leadership, and creativity that today’s talent market demands.

Northeastern’s signature co-op program immerses students in the job search process and full-time work related to their field of study. Employers gain the advantage of recruiting career-ready talent who already understand their culture, goals, and workflows.

Work integrated learning opportunities are thriving, too. Northeastern’s Toronto campus recently launched the Co-Curricular Experiential Program (CEP)—a first-of-its-kind initiative. It is broadening a robust network of community partners and expanding its reach through skills-based projects.

The university’s affiliates also enable student success through panels, guest lectures, and coordinated programming. From solving community challenges to shaping organizational strategy, such activities link learning with meaningful outcomes.

Complementing these career-focused efforts, Northeastern has introduced future-of-work programming. In 2025, it launched the AI in Career Development Workshop Series. These interactive workshops taught practical ways to use AI tools for résumés, LinkedIn profiles, interviews, and workplace success, boosting participants’ confidence and fluency with emerging technologies.

Toronto’s experiential opportunities embody Northeastern’s belief that education should be practical, human-centred, and attuned to both international challenges and local opportunities.

STUDENT PARTICIPATION AND RECOGNITION

15 students: Enactus Canada National Exposition in Calgary

12 students: Climate Resilience Hackathon across six campuses

16 student interest groups at the Toronto campus

It Takes a Network

Our partnership ecosystem is a team effort spanning disciplines and sectors. New initiatives have strengthened social ties, diversified applied learning, and positioned students to make significant contributions in professional settings.

APPLIED LEARNING SNAPSHOT

Since 2020

- 400+ total co-ops
- 1,000+ unique employers engaged

2023-2025

- 30+ active community partnerships
- 65+ experiential projects launched

2025 to date

- 150+ Co-Curricular Experiential Program (CEP) applications
- 40 CEP projects with 25+ community partners
- 90+ co-op students at leading companies, including Hydro One, EllisDon, Roche Diagnostics, RBC, and NAV CANADA
- 70+ students across Toronto, Vancouver, California, and Boston campuses participated in a pilot of the AI-powered co-op reflection tool, InStage
- 10+ experiential treks to organizations such as Eurofins Canada, Teranet, Clark Construction Management, and SteriLabs
- 75 on-campus career and industry-focused events



Faculty Spotlight: Dr. John Wilder

Assistant Teaching Professor, College of Professional Studies

Professor John Wilder designs applied Analytics courses that challenge students to work with real, raw data. He also collaborates with external partners to bring industry feedback into the classroom. In addition to the TCCS project, Prof. Wilder’s students have worked with Canadian Feed the Children. Through the AI Fellows program—sponsored by the Provost and Chancellor and coordinated by our Boston campus’s Center for Advancing Teaching and Learning Through Research—Prof. Wilder partnered with faculty across campuses to share effective AI teaching practices.

Learning Meets City Building

Northeastern University’s Toronto campus is an integral part of the city. Through joint projects with municipal departments and agencies, students and faculty are applying their expertise to local challenges. These initiatives are grounded in shared purpose: City leaders gain fresh insights, and students acquire experience that prepares them to lead in civic-minded, data-driven careers.

SUPPORTING THE CITY’S MENTAL HEALTH EMERGENCY SERVICE

Faced with growing dispatch data, the Toronto Community Crisis Service (TCCS)—a non-police emergency mental health response run by the Police Reform Unit—turned to Professor John Wilder’s data visualization class.

Students rolled up their sleeves. They cleaned messy real-world datasets and uncovered patterns in the dispatch data, including seasonal trends and hourly spikes, that could inform staffing and resource allocation for TCCS.

“It demonstrated the value of harnessing innovative partnerships with post-secondary institutions that allow students to obtain their course credit and help us add a different perspective to the work we’re doing,”

Nicole Watson

Police Reform Unit Manager

PREDICTING CONGESTION AT MAJOR EVENTS

When Toronto braces for sold-out concerts like Taylor Swift’s six-show Eras Tour, congestion can bring the city to a halt. In anticipation of such events, Northeastern organized a cross-campus hackathon involving students from the Toronto and Vancouver campuses. Students analyzed mobility data from a past Lady Gaga concert to forecast traffic flow during Swift’s performances and assist City of Toronto officials in planning.

Through their analysis, the winning team found that concert-goers tend to arrive in Toronto through a concentrated area but disperse when leaving. Analytics Professor Yvonne Leung and Professor John Wilder co-led the event with the City of Toronto’s director of traffic management and a large-scale telecommunications company.

Northeastern students and faculty are now building on their findings through ongoing data analysis for the city.



Faculty Spotlight: Dr. Yvonne Leung

Assistant Teaching Professor, College of Professional Studies

Since co-leading Northeastern’s 2024 traffic hackathon with the City of Toronto, Professor Yvonne Leung has continued to spearhead research at the intersection of technology, health, and public well-being.

With more than 15 years of experience in psychosocial and mental health research, she brings interdisciplinary expertise to the Analytics program. A published scholar with 44 peer-reviewed articles and over 70 conference presentations, Prof. Leung is also a scientist at the University Health Network, where she designs AI-powered care models for cancer patients.

Real Work. Real Experience. Real Impact.

Our co-op program is a launchpad for careers. Here’s how four students turned experiential learning into meaningful professional growth.



Weirui Wang
*Master of Professional Studies in Analytics
Co-op with Toronto Transit Commission*

“The university does a great job of ensuring its industry partners are reputable companies that we can gain a lot from.”

From analyzing fire data to improving emergency response protocols, Wang made her mark at the Toronto Transit Commission. As part of the emergency management team, she analyzed decades of incident data, created visual dashboards, and contributed to real-time risk assessments. Wang’s work informed public safety planning and strengthened interdepartmental efforts, highlighting her growing expertise in data analytics and leadership. Behind the scenes, she leveraged every resource, from co-op advisors and campus events to alumni, to secure her role.



Qi (David) Ren
*Master of Science in Information Systems
Co-op with CIBC*

“My co-op experience is a great reference for future opportunities.”

Ren enhanced his résumé with applied course projects, a hackathon win, and on-campus roles before securing a co-op as a software developer at CIBC. There, he contributed to the bank’s award-winning app, gained experience with Agile methodology, and learned to thrive in a hybrid workplace—valuable preparation for Canada’s tech sector. He now works as a Software Developer at Google.



Arun Radhakrishnan
*Master of Science in Project Management
Co-op with Alcohol and Gaming Commission of Ontario*

“Working in a Canadian work environment and networking were two of the biggest benefits of my co-op.”

At the Alcohol and Gaming Commission of Ontario, Radhakrishnan worked at the intersection of analytics, compliance, and risk management. During his technology regulation and iGaming compliance co-op, Radhakrishnan contributed deliverables such as risk mitigation and data modelling. He also gained insight into senior-level decision-making and formed a professional network.



Hafsa Saiyed
*Master of Science in Biotechnology
Co-op with Testmark Laboratories*

“Seeing how theoretical knowledge applies in a professional setting helped me understand the fundamentals of the field in a whole new way.”

In a laboratory co-op role at Testmark Laboratories, Saiyed applied her academic knowledge in real-time to testing environments. She gained practical experience in chromatography, quality standards, and laboratory operations. Saiyed also stepped into a leadership role by overseeing the sample reception process.

Partnering with Industry for Lasting Outcomes

Northeastern's Toronto campus works hand in hand with industry to align graduate education with the needs of a fast-shifting workforce.

Through co-op, joint initiatives, and shared programming, our partners help shape the next generation of talent while benefiting from fresh perspectives and institutional expertise. Grounded in mutual value and a shared drive for progress, these partnerships are reimagining how students learn and how industries grow.

200+

INDUSTRY PARTNERS ENGAGED IN 2025

Bo Chen
MPS in Analytics '24

Northeastern University



“Northeastern’s ability to respond in an agile way to participating in non-traditional experiential learning allows us to take advantage of fresh perspectives from the next generation.”

Jonas Roberts

Director, Digital Environment, WSP Canada



“Northeastern’s human and financial capital investments have been invaluable in supporting our mission and expanding our impact throughout the academic landscape.”

Dr. Jason Field

President and CEO, Life Sciences Ontario

WSP CANADA AND THE ROUX INSTITUTE

When WSP launched its internal AI Incubation Challenge, the company turned to Northeastern’s global university for talent. Leveraging Northeastern Toronto’s relationship with WSP Canada, and with coordination from the Roux Institute in Portland, Maine, a cross-border collaboration took shape. Students from Toronto and the Roux Institute served as technical advisors, contributing to applied AI projects across WSP Canada and WSP USA. Together, the campuses established a framework that ensured high-quality results for the partner and transformative learning for students. This approach demonstrates how Northeastern’s integrated network meets the needs of both businesses and learners.

LIFE SCIENCES ONTARIO (LSO)

A leading voice in the province’s life sciences sector, LSO champions innovation, policy, and partnerships. As an Institutional Member, Northeastern University’s Toronto campus has played a key role in expanding LSO’s reach and influence. Through strategic engagement and ongoing support, Northeastern has amplified LSO’s work across academic and professional communities.



“Co-ops are an excellent method of networking with professionals in the construction industry.”

Lorraine Lei

Senior People and Culture Manager, EllisDon

ELLISDON

With a strong presence in Canada’s construction sector, EllisDon welcomed its first Toronto co-op student, Pinkal Patel, as a project coordinator on one of British Columbia’s largest healthcare redevelopment initiatives. The opportunity—secured through Northeastern’s job board and assisted by co-op advisors in Vancouver and Toronto—highlights the university’s global network and flexible approach to experiential learning. EllisDon has since hired two Toronto graduates, underscoring the value of co-ops in building a strong talent pipeline.



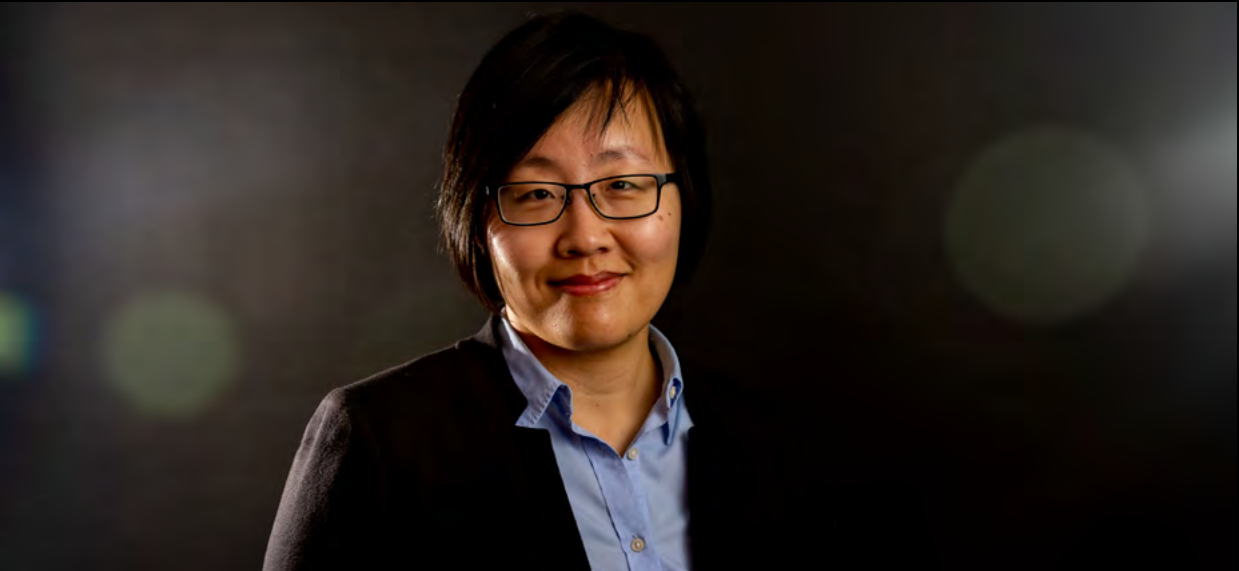
“Our partnership with Northeastern Toronto is more than a talent pipeline, it’s a strategic collaboration rooted in shared values of innovation, experiential learning, and community impact.”

Carina Vassilieva

Chief Human Resources Officer, Apotex

APOTEX

As Canada’s largest pharmaceutical company, Apotex is significantly invested in building the next generation of talent. Through career fairs, lab tours, and mentorship sessions, Apotex has created real-life learning moments for Toronto students, extending beyond recruitment to foster genuine connections. Recent visits have brought students face-to-face with senior leaders and research and development experts, offering firsthand exposure to cutting-edge practices.



Industry Engagement in Profile: Dr. Karen Zhou

Assistant Teaching Professor, College of Professional Studies

Professor Karen Zhou acts as a bridge between Toronto campus students and Canada’s regulatory and life sciences sectors. As the first full-time faculty member hired in the Master of Science in Regulatory Affairs program, she has forged strong industry ties through the Regulatory Affairs Professionals Society (RAPS). Prof. Zhou co-founded RAPS’s first Canadian chapter, develops educational content, and speaks at conferences.

Leveraging these professional ties, Prof. Zhou creates real-world learning moments for students. She facilitates co-op and full-time placements with medtech companies, mentors students in competitive symposiums, creates avenues for students to publish articles, and launched a speaker series showcasing global career pathways. Her advocacy has also enabled students to assume leadership roles and represent Northeastern at RAPS Convergence, a leading global regulatory conference.



Empowering Communities, Enriching Learning

Launched in 2025, Toronto’s Co-Curricular Experiential Program (CEP) marked a first for Northeastern—and a major win for the community and students.

The initiative pairs students with short-term projects that deliver lasting value for local organizations. It is applied learning with purpose: strengthening communities while broadening access to practical application.

CEP TO DATE



Community in Action



With Northeastern walking beside us, we’re blending education, construction, and healing to address a serious crisis.

Hermann Logsend
Executive Director of Metrax Indigenous Corp.

METRAX INDIGENOUS CORP.
To help address the Indigenous housing crisis, more than 10 students joined Metrax, a non-profit that empowers Indigenous communities through homebuilding, education, training, and sustainable development. Through Metrax’s construction training program, students contributed to housing projects and supported Indigenous youth, leveraging skills in design, project management, and training.



We’ve seen firsthand how this collaboration brings fresh ideas and commitment that deepen our impact. Partnering with Northeastern has been a transformative experience.

Francine Mbvoumbo
Founder and CEO of Mothers to Daughters

MOTHERS TO DAUGHTERS
Since February 2024, our Toronto students have advanced key initiatives at Mothers to Daughters, a non-profit mentoring network dedicated to bridging generational gaps among women. Students have contributed to the Mentorship Awards program and the Promoting Arts Community Entrepreneurship (PACE) event.



We are excited to see this partnership grow and expand across additional departments at WoodGreen

Maysam Fadel

Manager of Volunteer and Student Services

WOODGREEN COMMUNITY SERVICES

For WoodGreen, one of Toronto’s largest and most established social service agencies, students delivered scalable, professional improvements rooted in academic expertise. Alongside the Volunteer and Students Services department, they crafted a Customer Service Excellence framework and an Advisory Committee Guide.



**One Network, Many Acts of Service:
Global Service Week**

Every fall, Toronto joins Northeastern’s Global Service Week, a cross-campus tradition rooted in giving back. Over the past three years, more than 60 Toronto students and staff have championed local causes through volunteer efforts.

Participants earn a digital badge for Global Service Week. More importantly, they leave with deeper ties to the city and a lasting commitment to community.

THE TORONTO TEAM HAS BEEN ON THE GROUND WITH:

- Don’t Mess with the Don – Restoring the Don Valley ecosystem
- New Circles Community Services – Sorting and restocking the clothing bank
- Habitat for Humanity – Organizing inventory and packaging operations



Connected Campus: Student Life in Action

Student life doesn’t stop at the classroom door. With 16 active Student Interest Groups (SIGs) and over 300 students involved, our learners are shaping an on-campus community as diverse, inclusive, and dynamic as Toronto itself. These groups help students cultivate leadership skills, embrace shared purpose, and enrich the graduate learning journey.

SIGS IN PROFILE

EcoChampions Alliance (ECA)

Committed to sustainability and environmental action, ECA unites students for various green initiatives. From organizing community cleanups to promoting eco-conscious behaviours, the group helps shape a campus culture rooted in responsibility and a greener future.

NURA Toronto Student Community

The group supports Regulatory Affairs graduate students through industry panels, peer mentorship, and professional development sessions. NURA creates space for students to connect, grow, and lead in one of the fastest-evolving sectors of healthcare and public safety.

Google Developer Group (GDG) – On Campus

GDG cultivates a tech community on campus, offering Google-led workshops, practical projects, and support for student-led hackathons. Members explore real-world applications of Google technologies while sharpening their problem-solving and creative skills.

“One of the best parts of being a mentor was getting to help others and see them grow”

THE POWER OF PEER MENTORSHIP

Our student community thrives on connection. In Fall 2024, we launched our largest Peer Mentorship cohort yet:

100 trained mentors
400+ mentees

Bold Ideas Making a Difference

Big ideas are meant to go beyond the lecture hall and turn into action. Through leadership programs, innovation showcases, and national competitions, students are launching meaningful ventures, advancing causes, and leading with purpose.

PURPOSE IN PROFILE

Enactus Canada National Exposition

Just three weeks after launching Second Plate—a student-led platform that facilitates access to surplus restaurant food—our Enactus team excelled at the 2024 Enactus Canada Central Regional Competition. Competing against over 30 teams, they won three awards—Best Rookie Team, Best Collaboration, and Best Student Engagement—earning a spot at the National Exposition. Their project tackled food insecurity and waste, distributing over 150 discounted meals and rescuing 75 per cent of partners’ surplus. Through teamwork, resilience, and funding, these students turned an idea into action.

Graduate Leadership Institute (GLI)

Launched in 2024 in Toronto, GLI is a six-week leadership program aimed at empowering graduate students to lead confidently. Participants sharpen communication and leadership skills while building networks across industries. The program refines global leadership competencies essential for career growth. Students who complete GLI receive a LinkedIn badge and a digital certificate.



Where Learning Meets Living

In a city that never slows down, student life at our Toronto campus keeps pace. With over 250 events each year, students connect, relax, and explore in diverse ways—from academic, career, and leadership activities to wellness, cultural, and social outings. Whether networking at a campus mixer, joining a scavenger hunt, or snow tubing with classmates, student life here is anything but ordinary. It’s a lively community in one of the world’s most dynamic cities.

94%

STUDENT SATISFACTION
(Annual Student Experience Survey)

OFF-CAMPUS EVENTS

- Niagara Falls day trip
- Snow tubing in Toronto
- Exploring Ripley’s Aquarium of Canada
- Climbing the CN Tower
- Enjoying a scavenger hunt
- Checking out art and Graffiti Alley

NORTHEASTERN-WIDE EVENTS – WITH A TORONTO FLAIR

- Kicking things off at Orientation
- Discovering cultures during International Education Week
- Relaxing and recharging at Wellness Week
- Rolling up our sleeves for Community Service Week



A New Space to Think Bigger

Northeastern’s impact is growing, and so is its campus.

In Fall 2025, we moved into our new home at 375 Queen Street West: a six-storey campus designed for flexibility, collaboration, and connection. In the Queen West district—one of Toronto’s most vibrant, culturally rich neighbourhoods—the campus places learners at the centre of it all. Surrounding restaurants, transit routes, and cultural landmarks fuel convenience and inspiration.

This expansion marks a new chapter in how Northeastern delivers graduate education in Canada. With 12+ learning spaces, bookable rooms, and open-plan areas, every floor functions as a “neighbourhood,” distinct in purpose but united in supporting academic and professional life. These integrated spaces encourage dialogue, knowledge sharing, and creative thinking. They also shape innovative ways to learn and grow through inclusions like the Embedded Partner Hub. A unique, dedicated industry workspace, it connects students and organizations right on campus.

From quiet study sessions to large-scale events, the campus adapts to how students engage with education today. The site is more than a place to study—it’s a launchpad for ideas, leadership, and community, intended to grow with the ambitions of Northeastern’s Toronto campus and its learners.





DEMONSTRATED RESULTS, BOLD FUTURE AHEAD

The past five years have been defined by visionary ideas, foundational partnerships, and a shared commitment to growth—for our students, our city, and our university.

At Northeastern University's Toronto campus, we've redefined what it means to learn by doing. We've expanded our academic programs and cultivated lasting relationships with more than 1,000 industry and community partners. We've created real-life learning experiences that reflect Canada's evolving talent demands. I'm incredibly proud of the innovative culture and positive outcomes we've created together.

As we look ahead, we remain grounded in Northeastern's core belief: that education must progress in tandem with the world it serves. Whether through AI and advanced technology, healthcare transformation, or sustainable solution design, we know the future will require both technical skills and human insight. In this new era, it's not just about learning how to use emerging technologies. It's about understanding where human ingenuity fits in. That's why we continue to invest in leadership, innovation, and experiential learning.

With the recent opening of our new campus and our expanding network of learners and partners, I'm excited about what's to come. The impact we've made so far is just the beginning.



Aliza Lakhani

Northeastern University CEO and Dean, Toronto Campus
Managing Director, Global Campuses

